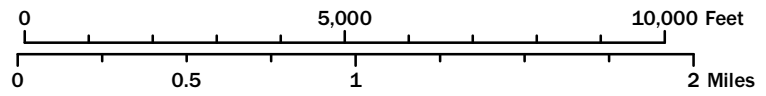


# Zoning Map, Town of Readsboro, Vt

Approved by the  
Readsboro Selectboard,  
May 29, 2013



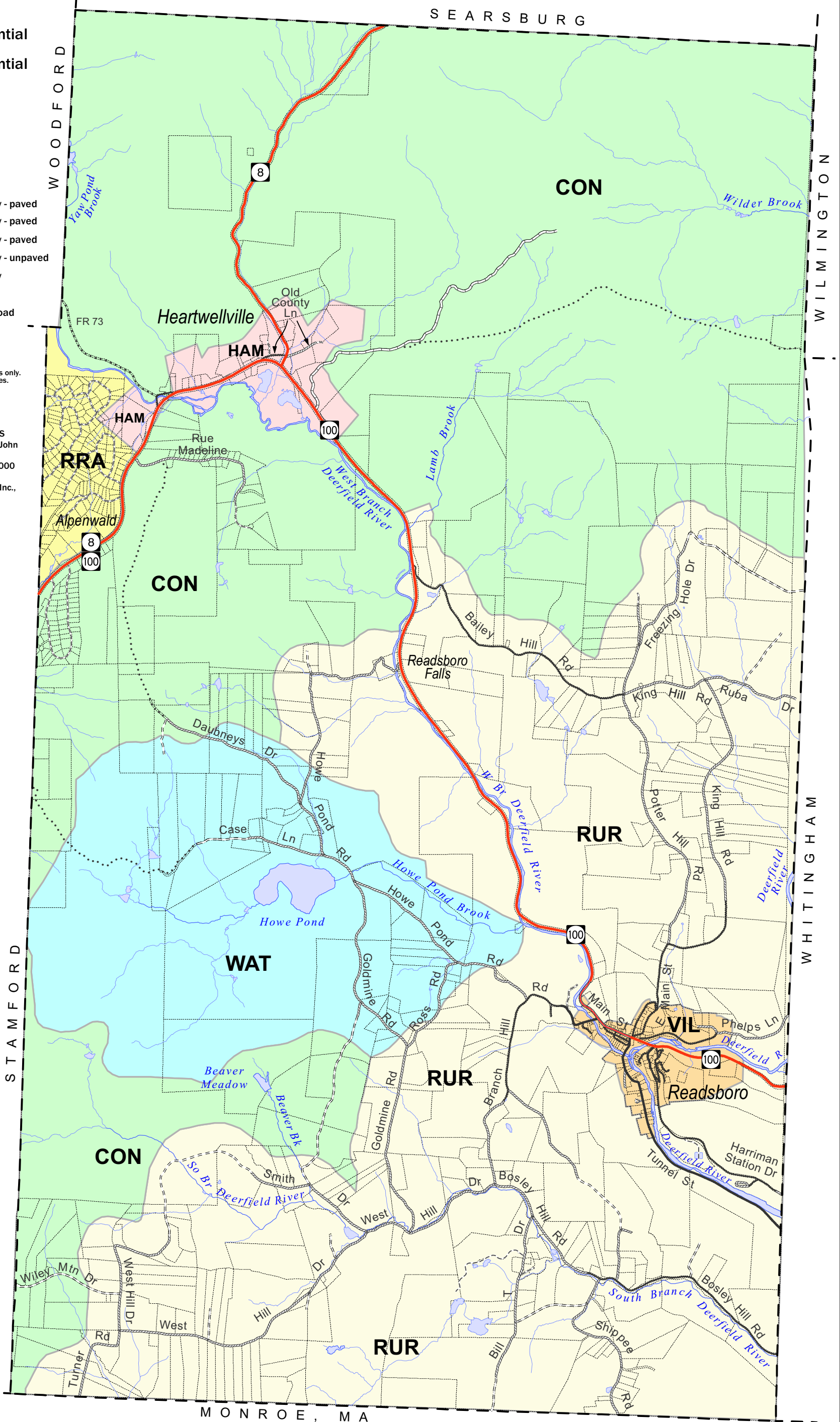
- CON Conservation
- WAT Watershed
- RR Rural Residential
- RRA Rural Residential Alpenwald
- HAM Hamlet
- VIL Village

- State Highway
- Class 1 town highway - paved
- Class 2 town highway - paved
- Class 3 town highway - paved
- Class 3 town highway - unpaved
- Class 4 town highway
- Legal Town Trail
- U.S. Forest Service Road
- Private road/drive
- Parcel line \*

\* - shown for general reference purposes only. These are not legal property boundaries.

**Data sources:**

- Zoning district boundaries are from GIS data developed by Readsboro resident John Whitman in 2004.
- Parcel lines are from Readsboro's 1:5000 tax map GIS data. These data were developed by Cartographic Associates, Inc., Littleton, N.H., and are current to 2011.



**WINDHAM REGIONAL COMMISSION**  
 139 Main St • Suite 505 • Readsboro, VT 05301  
 (802) 257-4547 www.windhamregional.org